

PET ALLERGIES – rhinitis, wheezing, sneezing, asthma, eczema & hives

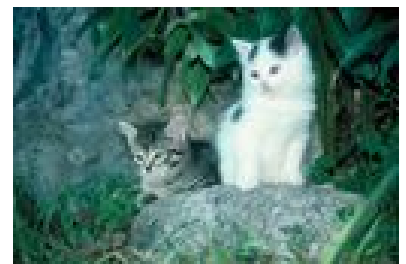
Who does it affect?

Allergic reactions to pets are estimated to affect around 26% of the population in the UK. Although it is more common in children & teenagers, it is also prevalent in adults and often starts after periods of absence from the pet owning home and the return or during periods of stress or illness treated with immuno-suppressant drugs --- antibiotics, antihistamines or steroids.

The Nature of the Condition:

Contrary to popular belief, the allergic reaction is caused by the allergen particles that emanate from the saliva of the pet and get onto the coat when the pet cleans itself. There is no scientific evidence to support the fact that some breeds are less allergenic than others and it is not influenced by whether the cat or dog or small pet moults or even whether it has a coat at all! There is evidence to suggest that allergen levels increase with age and males produce more than females.

Allergic reactions to cats and birds are more frequent than allergic reactions to dogs, horses, rabbits, guinea pigs and other small furry pets. However, allergic reactions to dogs, birds & horses are more severe when they occur.



Cats & small pets produce allergens called Fel d1, rats Ory c1/2, Mus m1 (0.5-20 microns) & so on



Similar allergens in Dogs & horses are called Can f1 & Equ c1 (0.5-20 microns)

Where are the allergens found?

Pet allergen particles are very small (between 1/10th & 1/100th of a pollen grain) so 82% of the residue in the home is found in the air. Only around 20% settle on household furnishings so cleaning has little impact on the level in the home. Allergen levels tend to increase significantly during the winter months when doors are closed and pets spend more time indoors. Thankfully, all pet allergens are positively charged particles so the negatively charged surfactants in the Bio-Life products can encapsulate and neutralise them without resorting to harsh or dangerous chemicals that are a danger to both pet and owner!

The Symptoms:

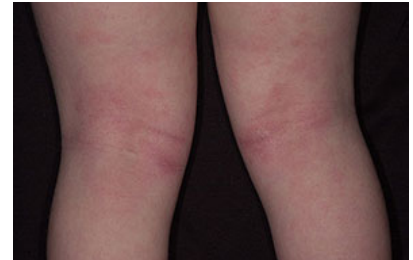
Pets can cause Type 1 or Type 4 allergic reactions:

Type 1:

- Rhinitis – constant stuffy/runny nose
- Conjunctivitis – itchy, irritable eyes
- Breathing difficulties, wheezing & coughing
- Asthma – severe breathing difficulties needing emergency medication

Type 4:

- Hives – raised, red spots
- Atopic dermatitis
 - Reddening of the skin
 - Dry, flakey patches
 - Constant itching
 - Secondary bacterial or viral infections & the formation of “hotspots”



It often appears first on the hands, arms & front of the legs where your pet comes into contact with you most often but gradually spreads.

In the case of asthma, there is no question that emergency medication is needed in the case of an attack but taking remedial action to prevent such attacks in the future means reducing the level of pet allergens in the home.

Bio-Life Products for People who are Allergic to Pets – TYPE 1:

BRAND	FUNCTION	APPLICATION RATE
Bio-Life PetalCleanse™ C for cats birds & small pets D for dog or horse	Pet cleanser to encapsulate the allergens on the coat without frequent bathing	Used once per week every week.
Bio-Life AirCleanse™	To encapsulate the allergens in the air	Twice per week for the first 3 weeks & once per week thereafter
Bio-Life AirCleanse™	Is “quick acting so ideal for unexpected allergic visitors or for reducing the level in the car!	

Bio-Life Products for People who are Allergic to Pets – TYPE 4:

BRAND	FUNCTION	APPLICATION RATE
Bio-Life PetalCleanse™ C for cats birds & small pets D for dog or horse™	Pet cleanser to encapsulate the allergens on the coat without frequent bathing	Used once per week every week.
Bio-Life HomeCleanse™	To neutralize the pet allergens on sofas & other soft furnishings	Once per month every month
Bio-Life MediCleanse™ Antimicrobial Gel	“Chemical friendly” to remove dry, scaly skin & prevent infection	Twice daily until the preventatives take effect
Bio-Life Pure Essence	Potent antimicrobial – to reduce infections yeasts & bacteria	Twice daily until the preventatives take effect
Bio-Life MediCleanse™ Moisturiser	For anti-oxidants to promote healing & to prevent scarring in recovery	Twice daily during the recovery period to aid healing & prevent scarring

PetalCleanse™ has been independently tested by Market Research Solutions Ltd and proven effective in over 97% of people who are allergic only to pets. Even multiple allergen sufferers (i.e. people who also have hayfever and dustmite reactions) were able to reduce their medication from 3.6 doses per week to 1.7 doses during the main hayfever season. The pet, pollen & dustmite allergens are additive in their effects. If you remove at least one source, it will significantly reduce your sensitivity to the others.

PetalCleanse is non-toxic if ingested and the coat conditioners benefit the pet.

AirCleanse™ plus PetalCleanse™ can alleviate both hayfever and pet allergies as well as neutralise other irritating pollutants in the home.

Households with several pets or have had the pets for a long time before the allergies occurred may wish to consider a “ Pet Starter Pack” to thoroughly clean beds, furnishings & carpets as well as the pet and the air.